

HRW5500TE

Electrical Specification @25°C

RoHS Compliant (PB Free)

Operating Temperature Range: -40°C ~ +85°C

Storage Temperature Range: -40°C ~ +85°C

Isolation: 1500Vrms 0.5mA 60sec (Primary to Secondary)

OCL: 350uH Minimum @100KHz 100mV with 8mADC

Turns Ratio: 1 : 1 ±3% (Primary : Secondary)

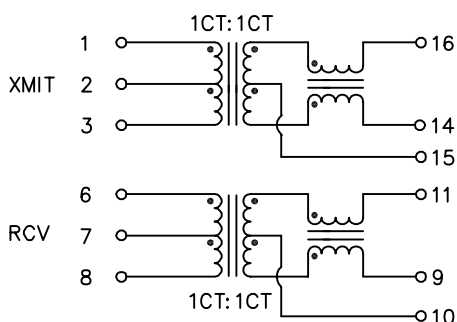
Insertion Loss: -1.1dB Maximum @300KHz ~ 100MHz

Return Loss: -20dB Typical @30MHz / -14dB Typical @60MHz
-11.5dB Minimum @80MHz

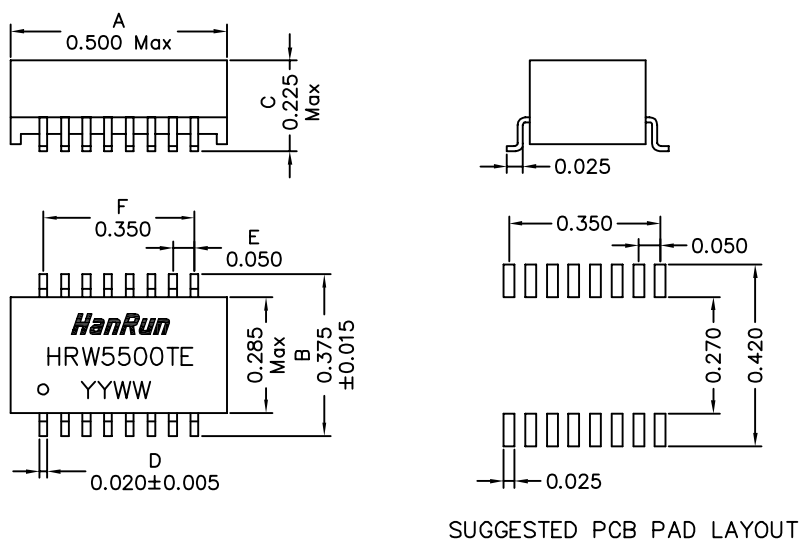
Different to Common Mode Rejection: -37dB Typical @30MHz ~ 50MHz
-30dB Typical @100MHz

Crosstalk: -45dB Typical @1MHz ~ 30MHz / -35dB Typical @60MHz ~ 100MHz

Schematics



Mechanical Dimensions



Unless otherwise specified, Tolerance: .xxx ±0.010

REV.: 00

PMODE [2:0]			Description
2	1	0	
0	0	0	10BT Half-duplex, Auto-negotiation disabled
0	0	1	10BT Full-duplex, Auto-negotiation disabled
0	1	0	100BT Half-duplex, Auto-negotiation disabled
0	1	1	100BT Full-duplex, Auto-negotiation disabled
1	0	0	100BT Half-duplex, Auto-negotiation enabled
1	0	1	Not used
1	1	0	Not used
1	1	1	All capable, Auto-negotiation enabled

